

Legacy Way in-tunnel air quality

Monthly trend report – August 2020

The table below sets out the in-tunnel air quality criteria for the Legacy Way tunnel as set out in the Environmental Authority (EPPR02587314). No notifiable trends were observed.

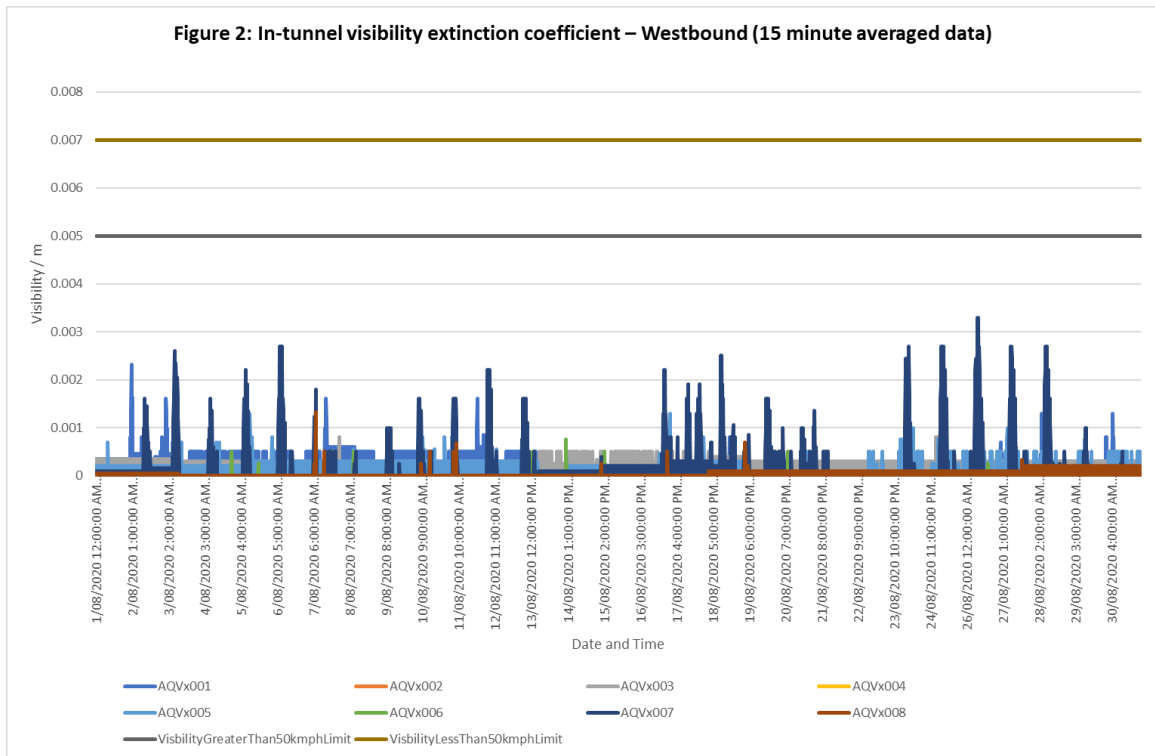
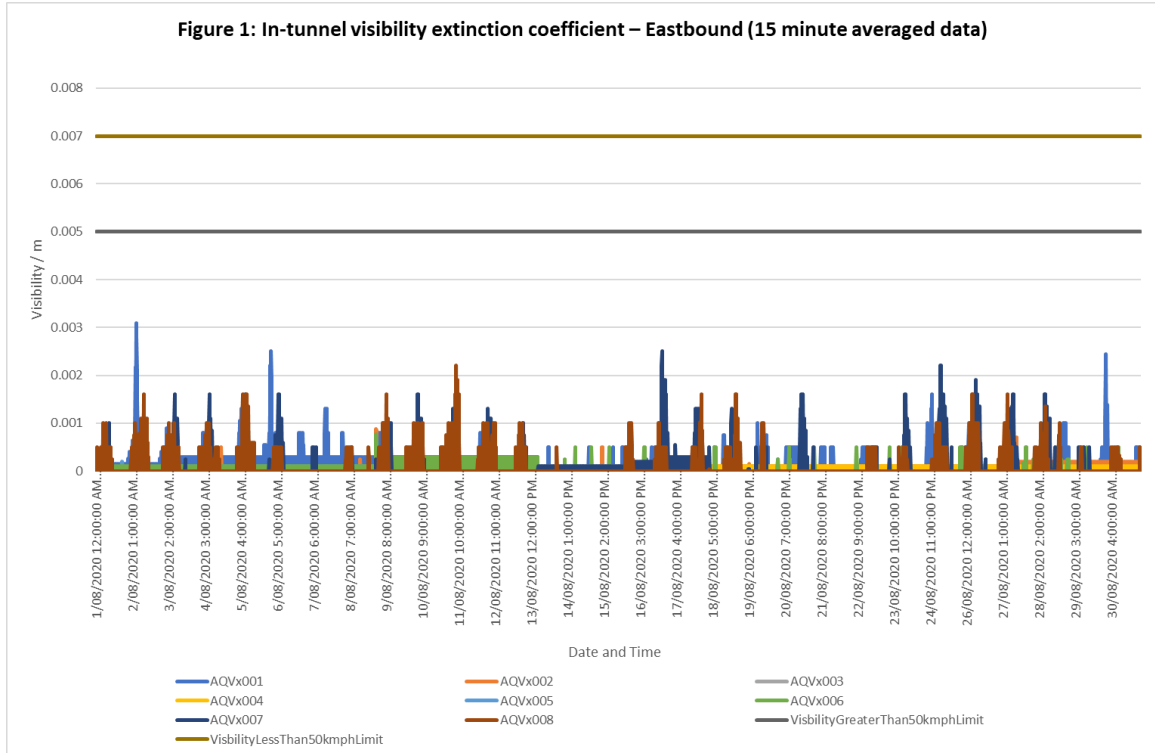
Table 1: In-tunnel air quality criteria

Parameter	Criteria
Carbon monoxide (CO)	70 ppm generally 90 ppm in peak traffic congestion
Nitrogen dioxide (NO ₂)	1 ppm (average)
Visibility coefficient (K)	0.005 m ⁻¹ for free flowing traffic (greater than 50km/hr) 0.007 m ⁻¹ otherwise

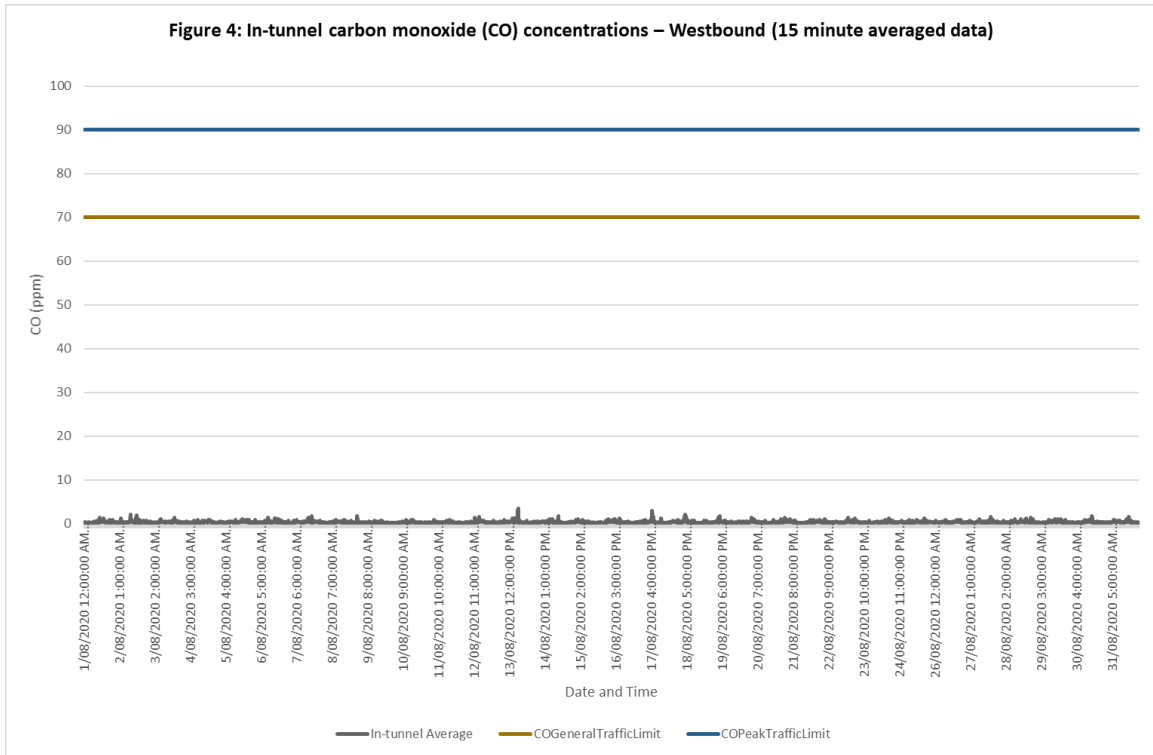
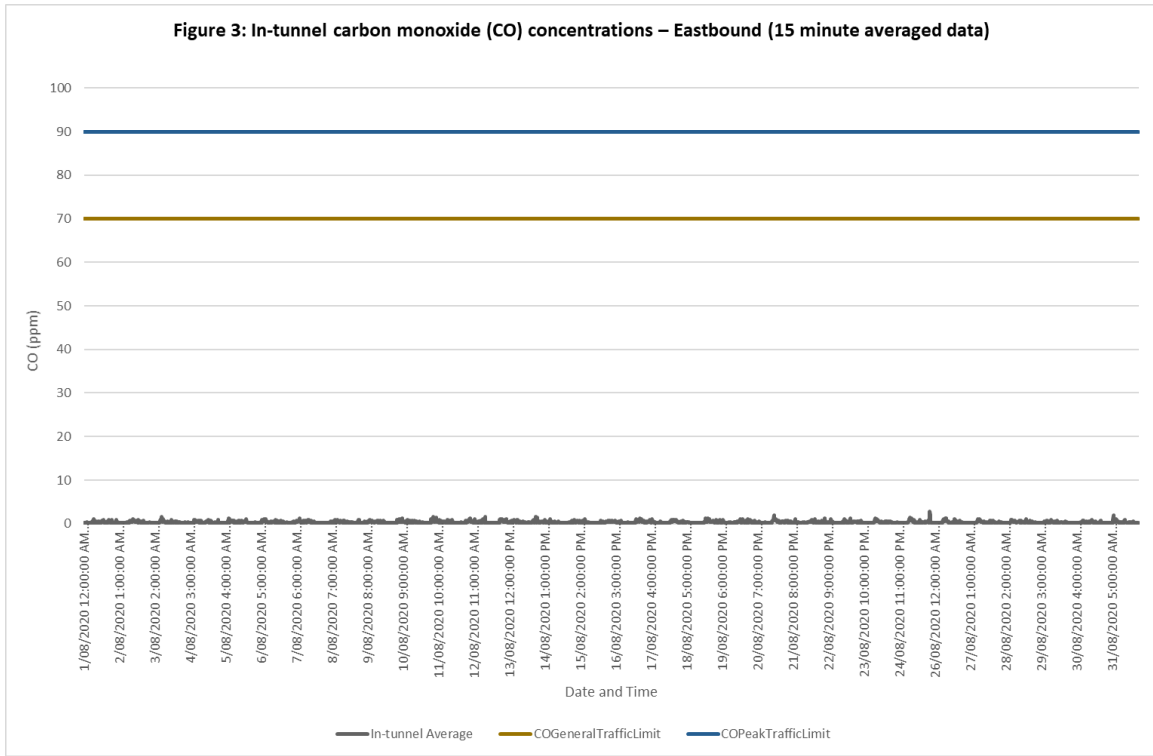
Notes:

1. Monitoring and measuring protocols for each criteria as set out in the PIARC guidelines, as current 2019.
2. Tunnel sensor average concentrations reported for Carbon Monoxide and Nitrogen Dioxide.
3. Peak traffic congestion occurs when traffic flows are less than 10 km/h.
4. Visibility coefficient (K-value) may fluctuate with peak conditions.

Visibility



Carbon monoxide



Nitrogen dioxide

