

Clem7 in-tunnel air quality

Monthly trend report – January 2020

The table below sets out the in-tunnel air quality criteria for the Clem7 tunnel as set out in the Coordinator General's Report. No notifiable trends were observed.

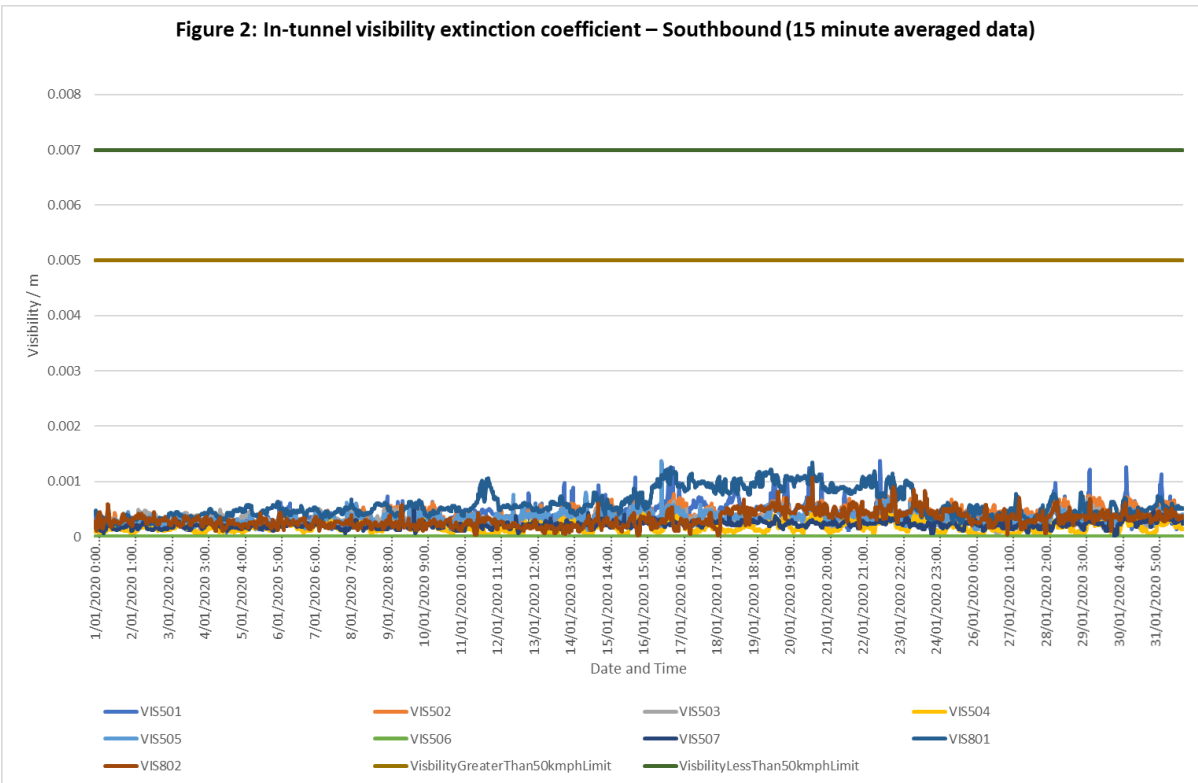
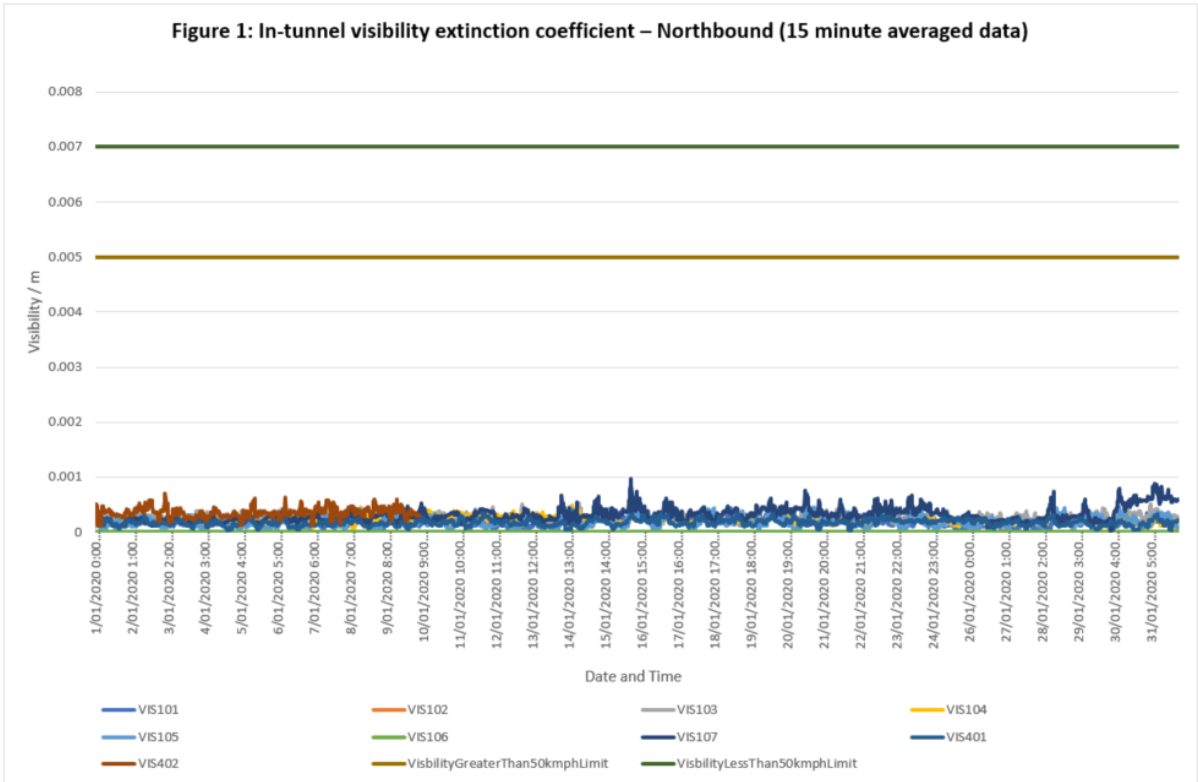
Table 1: In-tunnel air quality criteria

| Parameter | Criteria |
|-------------------------------------|--|
| Carbon monoxide (CO) | 70 ppm generally 90 ppm in peak traffic congestion |
| Nitrogen dioxide (NO ₂) | 1 ppm (average) |
| Visibility coefficient (K) | 0.005 m ⁻¹ for free flowing traffic (greater than 50km/hr) 0.007 m ⁻¹ otherwise |

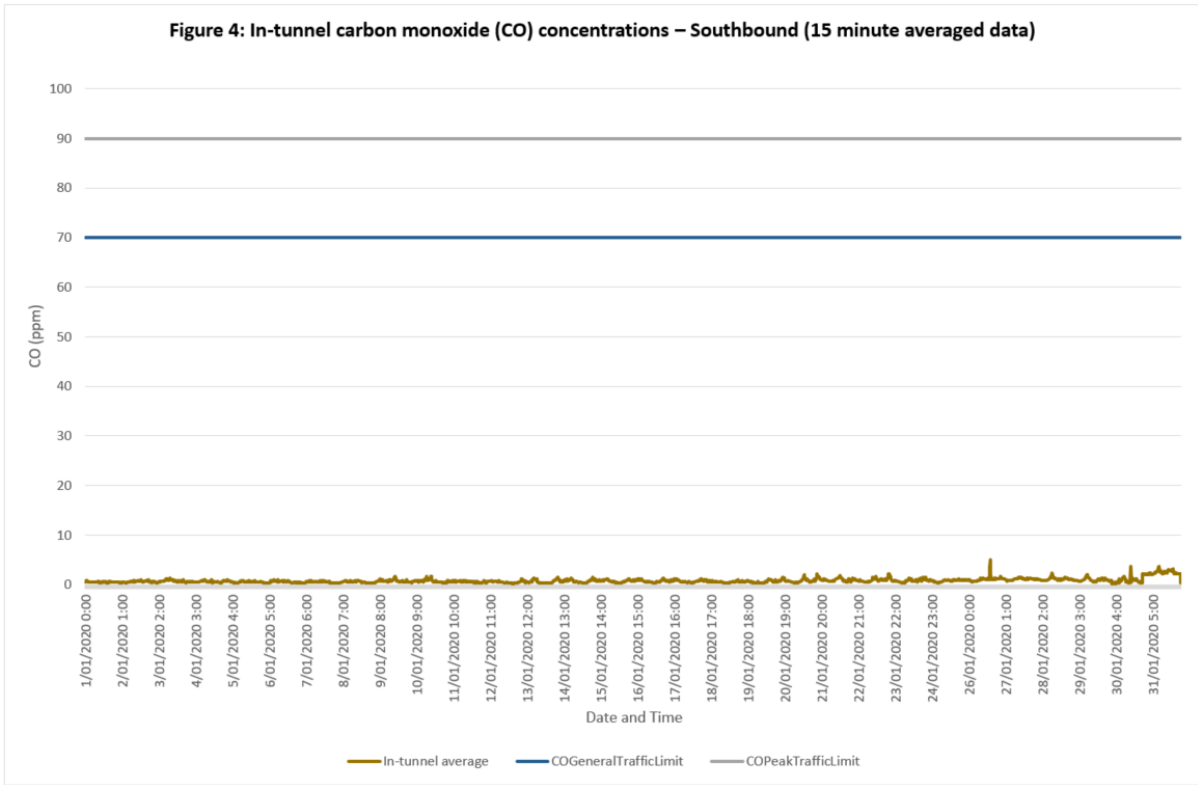
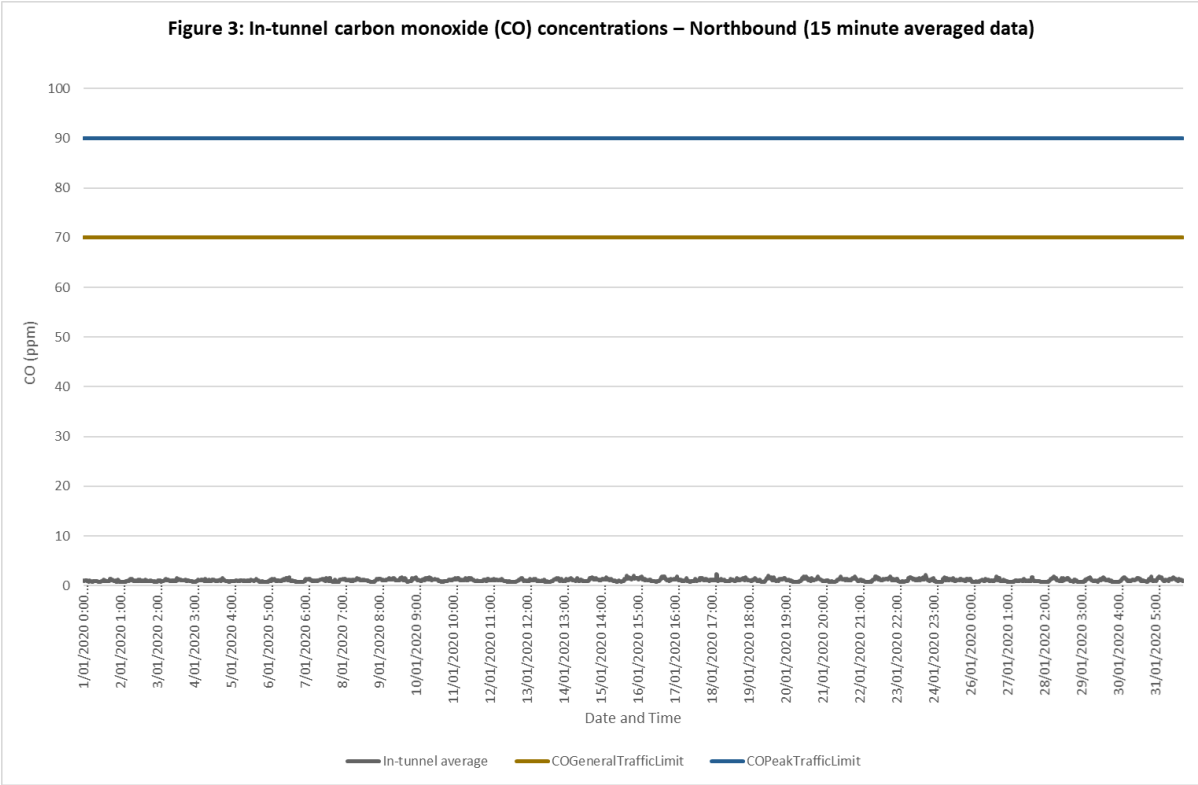
Notes:

1. Monitoring and measuring protocols for each criteria as set out in the PIARC guidelines, as current December 2012.
2. Tunnel sensor average concentrations reported for Carbon Monoxide and Nitrogen Dioxide.
3. Peak traffic congestion occurs when traffic flows are less than 10 km/h.
4. Visibility coefficient (K-value) may fluctuate with peak conditions.

Visibility



Carbon monoxide



Nitrogen dioxide

