

Legacy Way in-tunnel air quality

Monthly trend report – April 2019

The table below sets out the in-tunnel air quality criteria for the Legacy Way tunnel as set out in the Environmental Authority (EPPR02587314).

- For the month of April 2019 no notable trends have emerged.

Table 1: In-tunnel air quality criteria

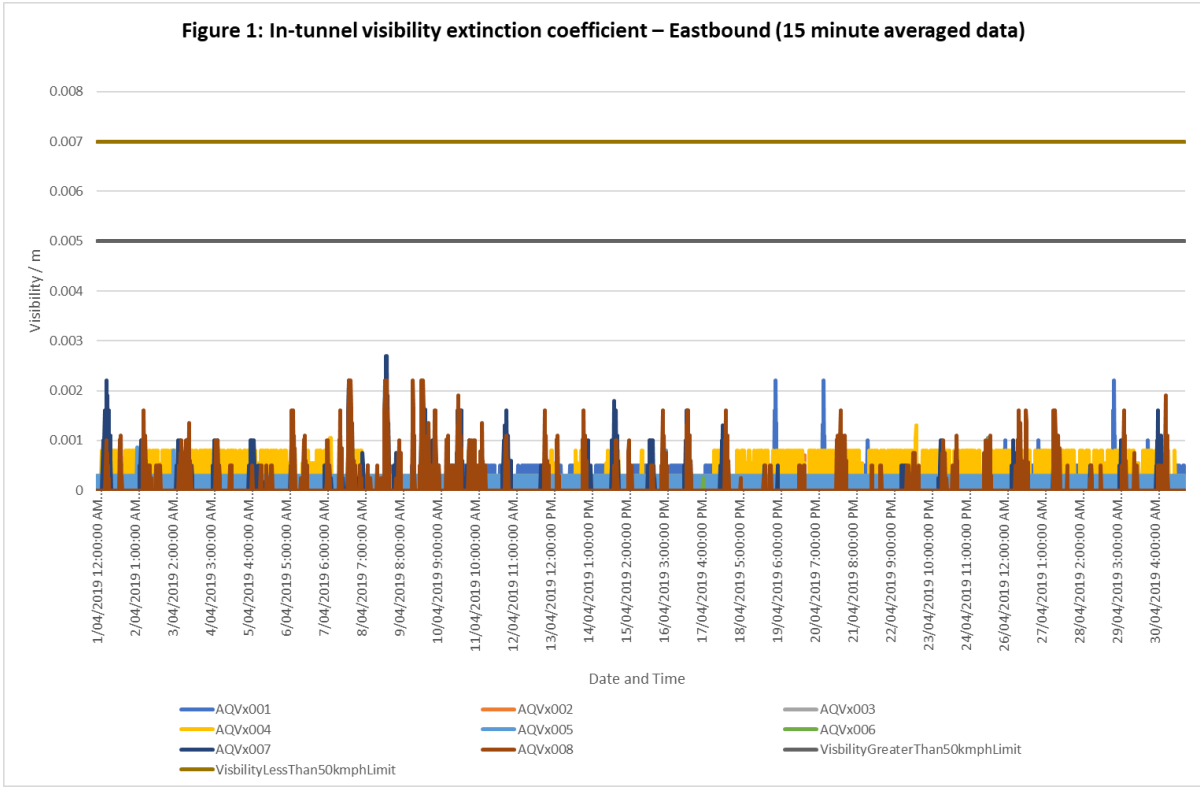
Parameter	Criteria
Carbon monoxide (CO)	70 ppm generally 90 ppm in peak traffic congestion
Nitrogen dioxide (NO ₂)	1 ppm (average)
Visibility coefficient (K)	0.005 m ⁻¹ for free flowing traffic (greater than 50km/hr) 0.007 m ⁻¹ otherwise

Notes:

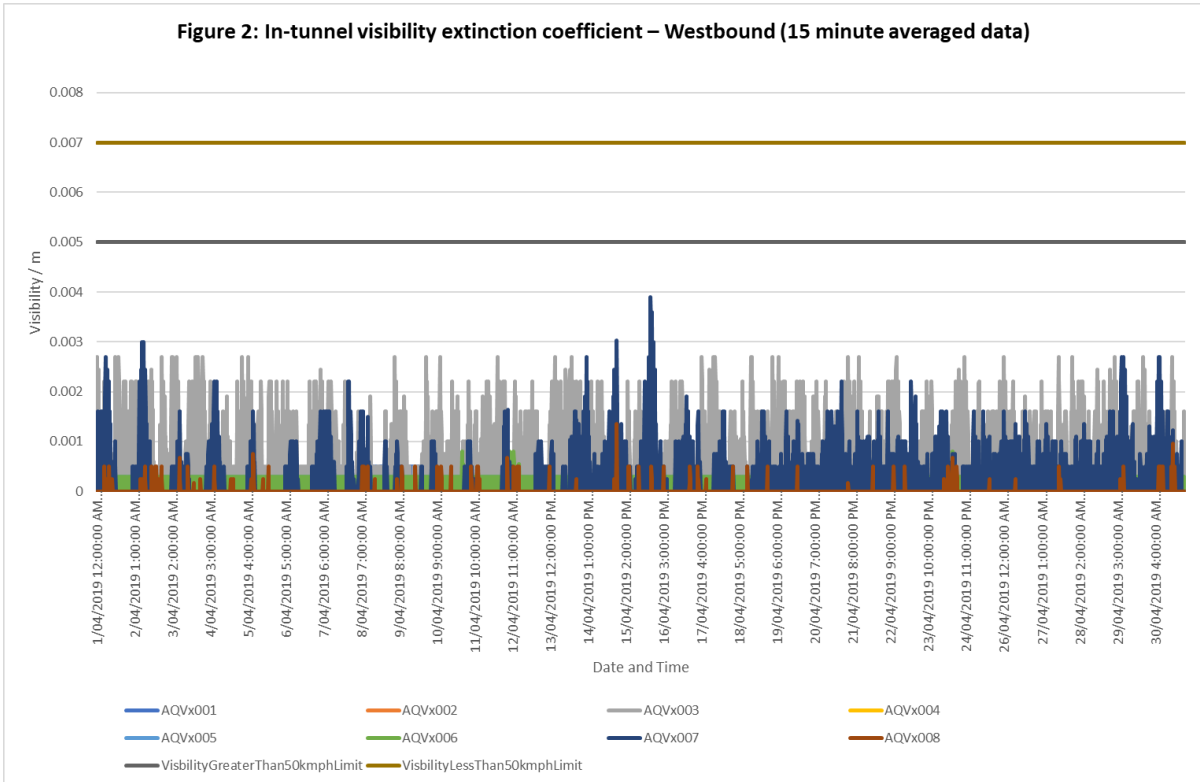
1. Monitoring and measuring protocols for each criteria as set out in the PIARC guidelines, as current December 2012.
2. Tunnel sensor average concentrations reported for Carbon Monoxide and Nitrogen Dioxide.
3. Peak traffic congestion occurs when traffic flows are less than 10 km/h.
4. Visibility coefficient (K-value) may fluctuate with peak conditions.

LEGACY WAY IN-TUNNEL AIR QUALITY

Visibility



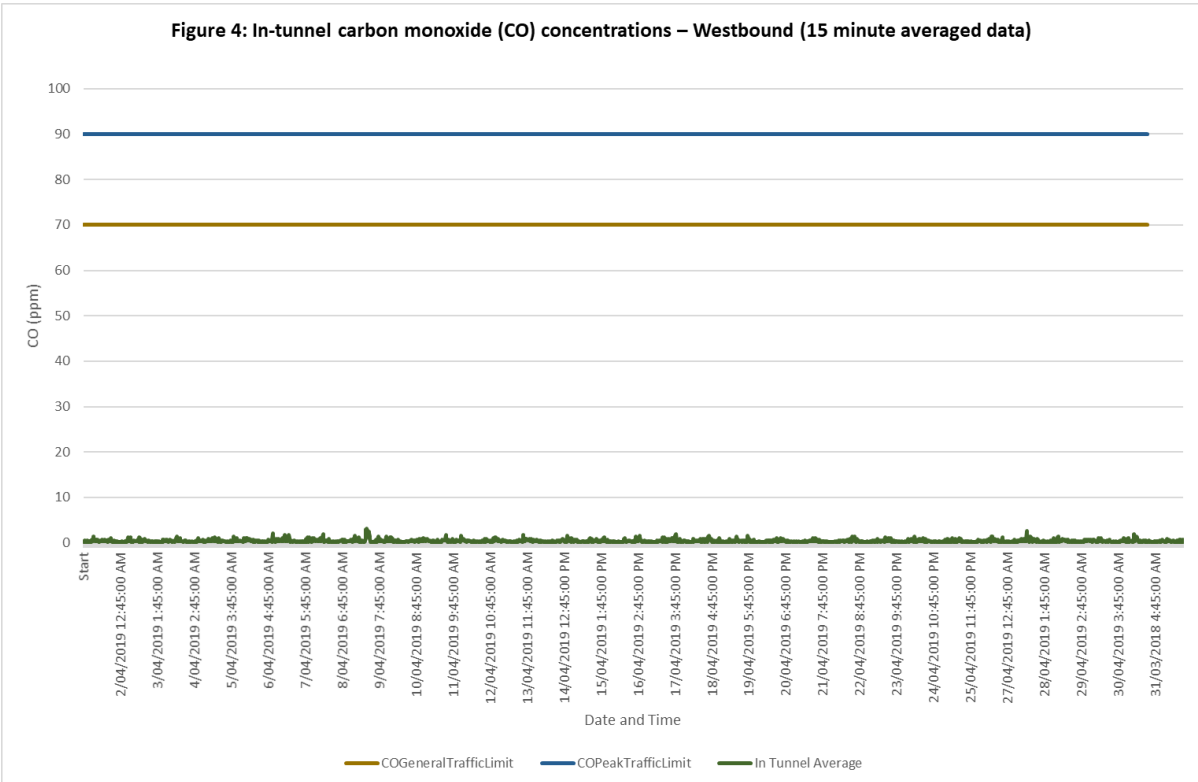
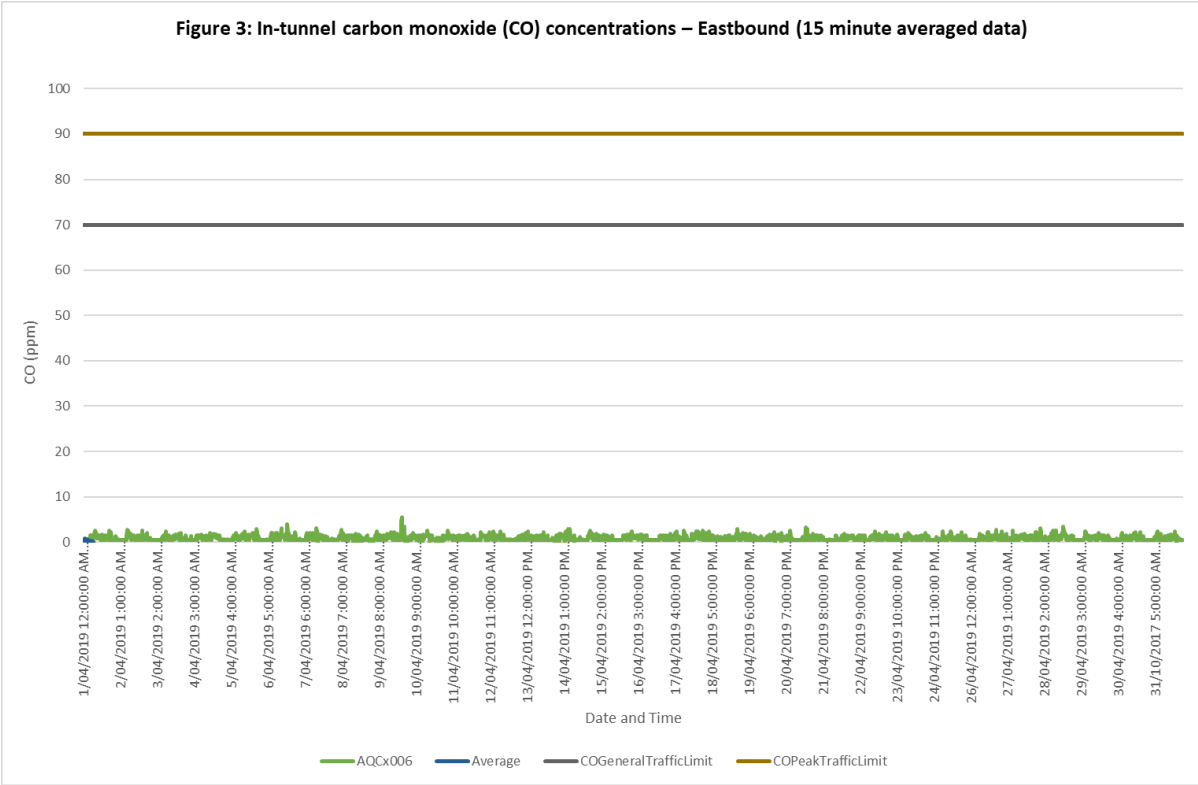
No comments



No comments

LEGACY WAY IN-TUNNEL AIR QUALITY

Carbon monoxide



LEGACY WAY IN-TUNNEL AIR QUALITY

Nitrogen dioxide

